

Capitatum Fractures Lesional Aspects

About 23 cases

A. Blancheton, Nantes
G. Bacle, Tours
P. Clément, Tours
S. Perlinski, Tours
J. Laulan, Tours

No conflict of interest

Study of 23 cases

Observational

Retrospective

Inclusion of capitulum fractures or pseudarthrosis in adults

Tours CHU database



**MAY THE LESIONAL MECHANISM
DETERMINE THE FRACTURE LOCATION
AND THE POSSIBLE ASSOCIATED
INJURIES?**



Data collection

- About the cases:

- 23 patients included during 27 years
- Mean follow-up : 11 months
- Mean age : 31 years



21



2

- About the trauma, 3 mechanisms:

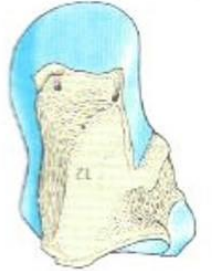
- Direct by compression
- Indirect by axial impaction
- Indirect by torsion

- About fracture or pseudarthrosis of the capitatum :

- Location and displacement
- Associated lesions

Results

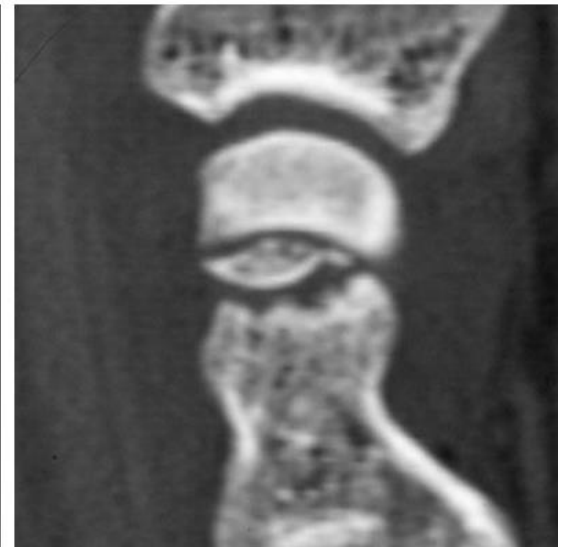
- 13 displaced fractures including 7 dislocations
- 3 isolated capitate fractures
- Fracture location: 7 neck / 8 body / 8 base
- Mechanism :
 - 7 torsions
 - 6 direct compressions
 - 10 axial impactions



Fracture of proximal third

- n = 7
- 4 delayed diagnosis
- Indirect violent traumatism by torsion
- 6 displaced

- Associated lesions:
 - 4 scaphoid fractures / 1 perilunar dislocation
 - 6 luno-triquetral / 5 scapho-lunate injuries



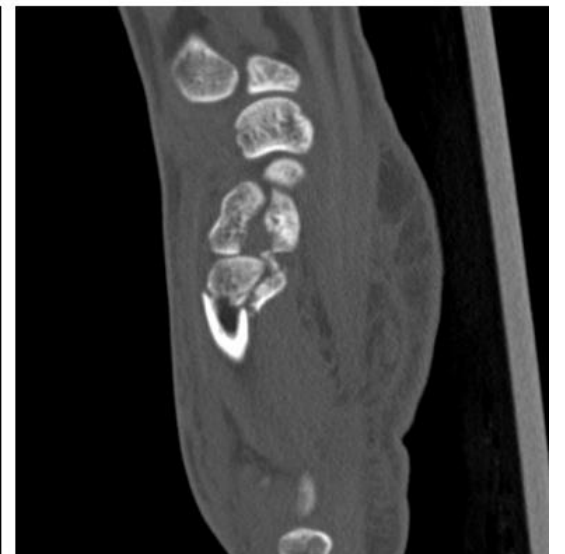
Fracture of middle third

- n = 8
- 4 delayed diagnosis
- Traumatism :
 - Direct trauma: 6
 - Impaction: 2
- No displacement
- No ligamentous injury
- 3 isolated cases

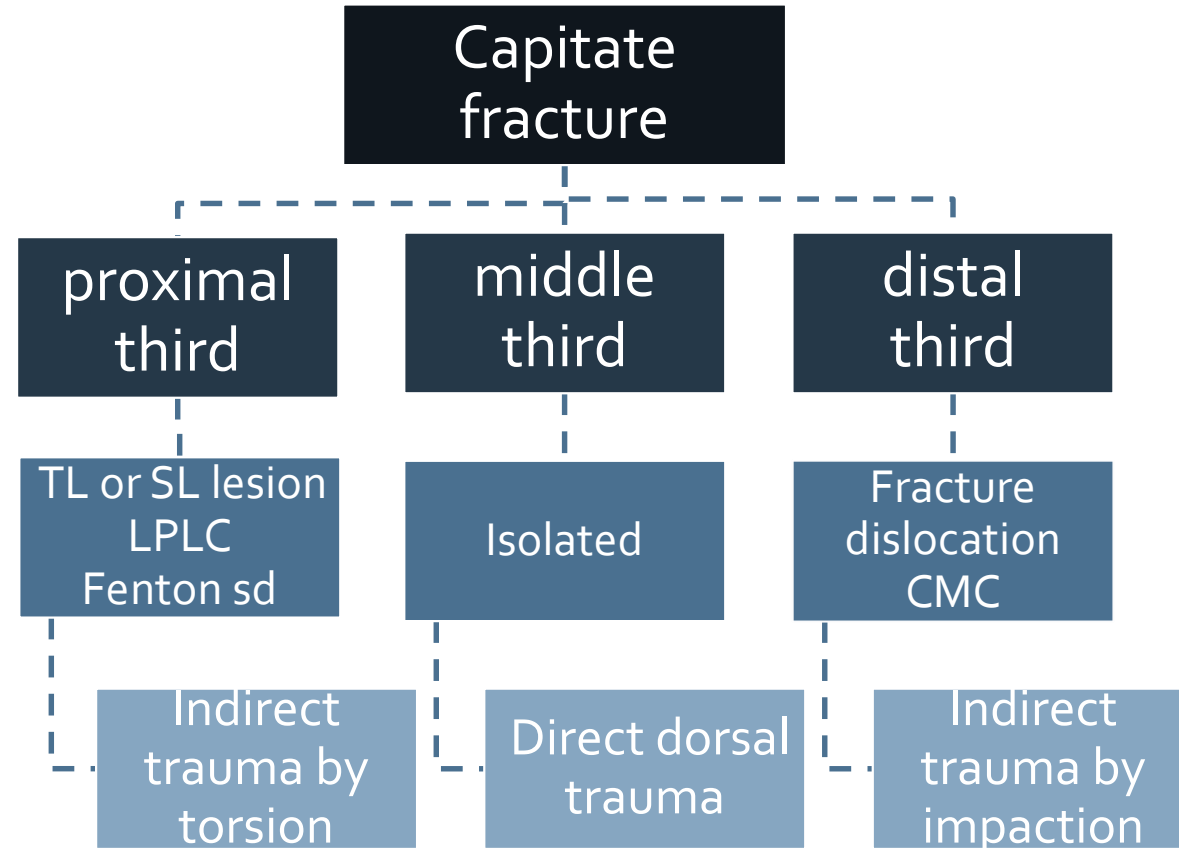


Fracture of distal third

- n = 8
- Traumatism by axial impaction
- Associated fractures (hamatum, metacarpal) with 5 carpo-metacarpal dislocation
- No SL or LT lesions



Conclusion



OPTIMIZATION OF DIAGNOSTIC PROCESS