

Peritrapezial osteoarthritis and prosthesis ?



BESANÇON
SITE PITTORESQUE, CENTRE DE TOURISME
STATION SALINE MUSÉES HORLOGERIE

**L Obert - G Menu
S Zamour - A De Bie
A Buffet - F Loisel**



*Orthopedic, Traumatology, Plastic and Hand surgery Unit & CIC IT 808
University Hospital of Besançon - Besançon F25033*

lobert@chu-besancon.fr



Disclosure - Conflict of Interest

**FX Solution, Medartis, Evolutis, Keri Medical, Branchet, Elsevier
University hospital & Medical School of Besancon**

Symptomatic Peritrapeziazial osteoarthritis

Assess whether both **joint levels** are symptomatic

Combined **corticoid** Injection ?

Cannot recommend one technique over the others given **low level of evidence**

Determine whether the surgeon **wants to treat both** conditions in **one shot**

Peritrapezial osteoarthritis and prosthesis ?

If you implant a prosthesis at TMC level ...

What about **the evolution of the implant ?**

What about the **evolution of STT joint ?**



Peritrapezoidal osteoarthritis and prosthesis ?

Pain residual pain after prosthesis

“Not recommended” ...

Irwin AS et al J Hand Surg Edinb Scotl. 1995

Masmejean E et al Chir Main. 2003



Peritrapezial osteoarthritis & evolution of the implant ?

	STT-	STT+
N (prosthesis)	86	21
Follow up (months)	45.2	46.9

Peritrapezoidal osteoarthritis & evolution of the implant ?



Pro

P Ledoux, B Lussiez,
C Falaise



Retro

L Obert, S Zamour,
G Menu

N	16	20
Follow up	12 months (10-14)	70 months (7-44)
Age	70	72 (58-86)
EVA	7 1.1	7.3 1.2
Dash	37.1 21,5	77.4 20
Kapandji	7.7 9.3	7.9 9
Key Pinch	3.4 5.4	2.7 6.1

Peritrapezial osteoarthritis & evolution of STT joint ?

N = 131 patients / 167 implants

FU = 6,3 y (Max 17,3)

38 % Preop ... 50% Post op

STT Evolution % Crosby stage ...

32% stage 0 - 77% stage 2

Conclusion

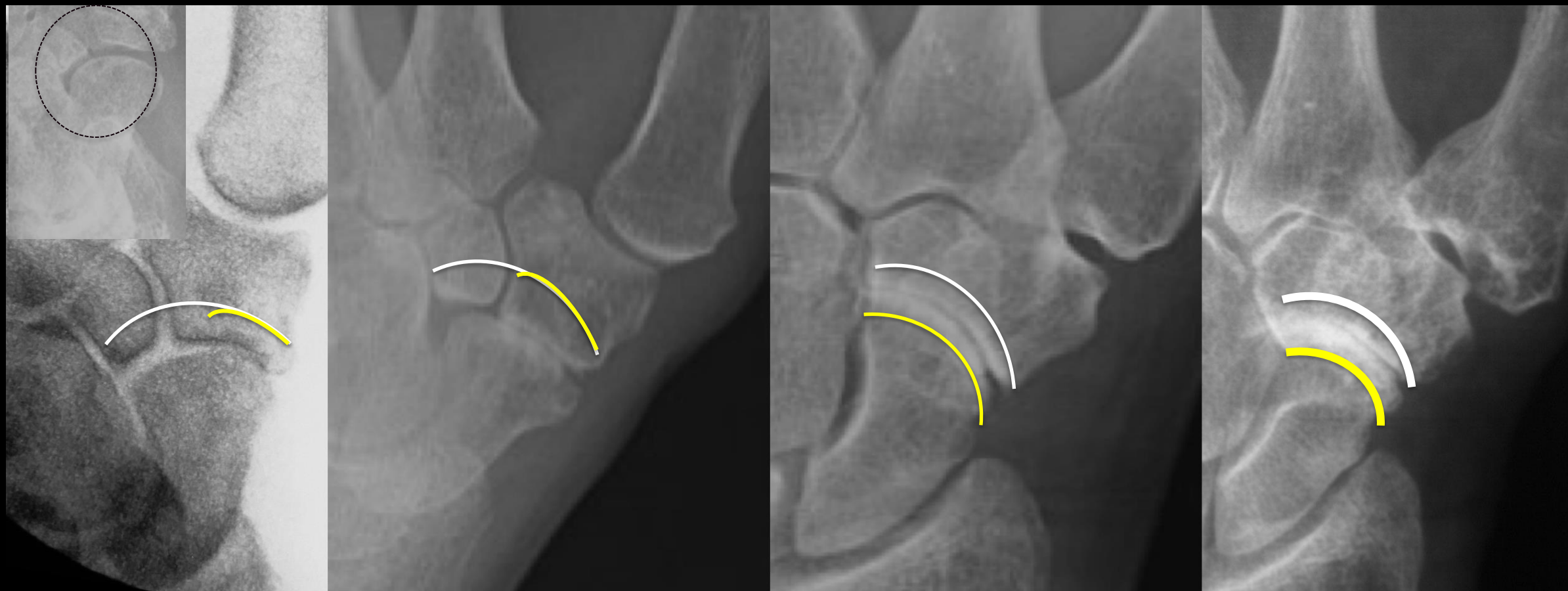
Peri trapezium arthritis : Have to choose - Low level of evidence ...

Distal level : most frequent symptomatic ...

Determine whether **YOU & The PATIENT** ...

SFCM classification !?

Wrist : AP + S + $\frac{3}{4}$ + Kapandji view + CT Scan : **3 bones / 2 joints**



1 : < 50%

2 : > 50%

3 : 100%
but visible joint

4 : Ankylosis